

Hitachi Power Tools

TECHNICAL DATA

LIST Nos.
UM12VST: E110
UM16VST: E111
Dec. 2010

PRODUCT NAME

Hitachi Mixer

Models	120mm	UM 12VST
	160mm	UM 16VST

MARKETING OBJECTIVE

The first Hitachi brand mixers the Models UM 12VST and UM 16VST were developed to meet the strong demand in Europe for very competitively priced mixers.

APPLICATIONS

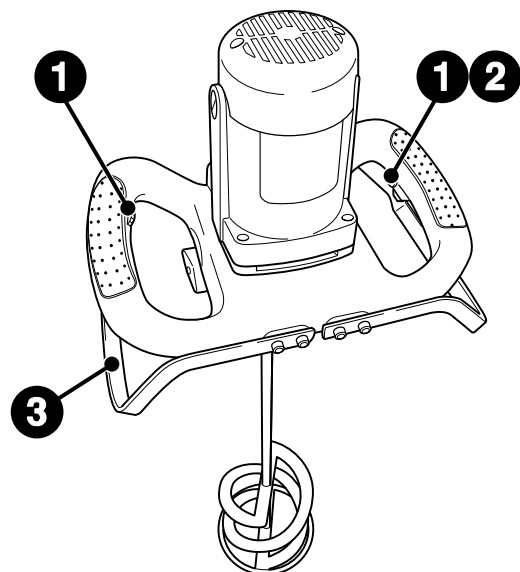
• Applicable work: Stirring paints, adhesives, mortar, etc.

SELLING POINTS

[NEW FEATURES]

- 1 ON/OFF Switch + Variable Speed Dial
- 2 Soft start function
- 3 Large bumper to prevent damage

SPECIFICATIONS AND PARTS ARE SUBJECT TO CHANGE FOR IMPROVEMENT.



HITACHI

 **Hitachi Koki Co., Ltd.**
International Sales Division

U

REMARK:

- For more information about HANDLING INSTRUCTIONS, visit our website at:

http://www.hitachi-koki.com/manual_view_export/

- Throughout this TECHNICAL DATA AND SERVICE MANUAL, a symbol(s) is(are) used in the place of company name(s) and model name(s) of our competitor(s). The symbol(s) utilized here is(are) as follows:

Symbols Utilized	Competitors	
	Company Name	Model Name
C	COLLOMIX	CX 40
D	COLLOMIX	CX 60

CONTENTS

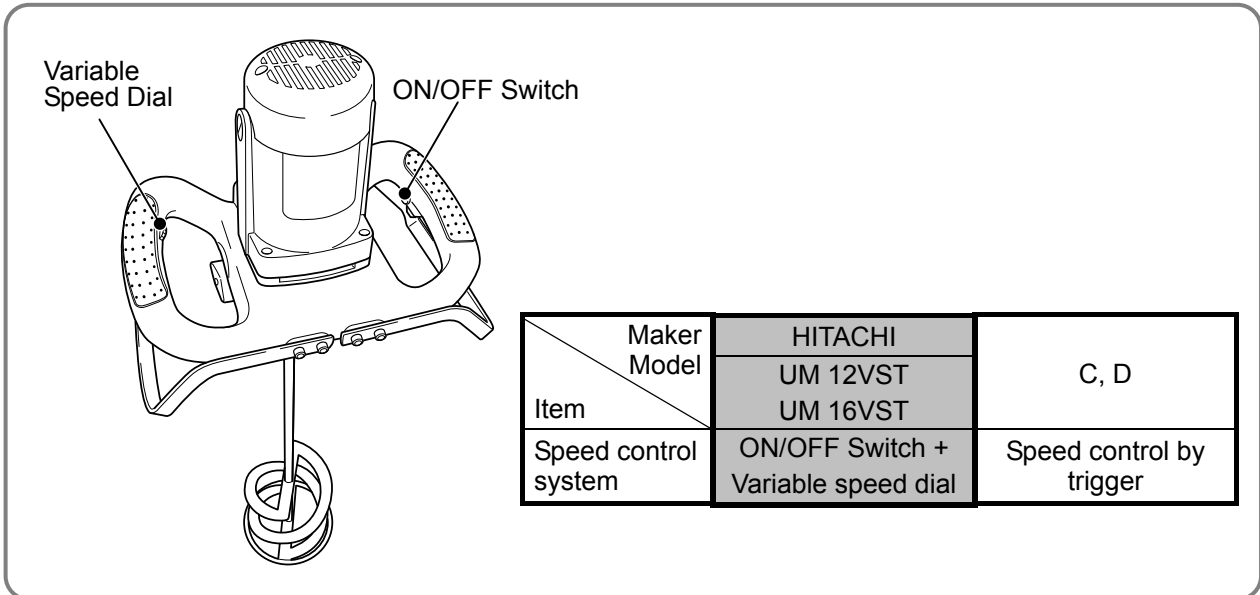
	Page
SELLING POINTS	1
SPECIFICATIONS	2
1. Specifications	2
COMPARISON WITH SIMILAR PRODUCTS	3
1. Comparison of Specifications	3
PRECAUTIONS ON SALES PROMOTION	4
1. Safety Instructions	4

SELLING POINTS

1 ON/OFF Switch + Variable Speed Dial

The mixer comes equipped with an ON/OFF switch on one side of the handle and a variable speed dial on the other side to facilitate proper speed control for the materials being stirred, thereby allowing the user to hold the main body securely.

(For plans C and D, the degree to which the switch trigger is pulled controls the stirring speed.)



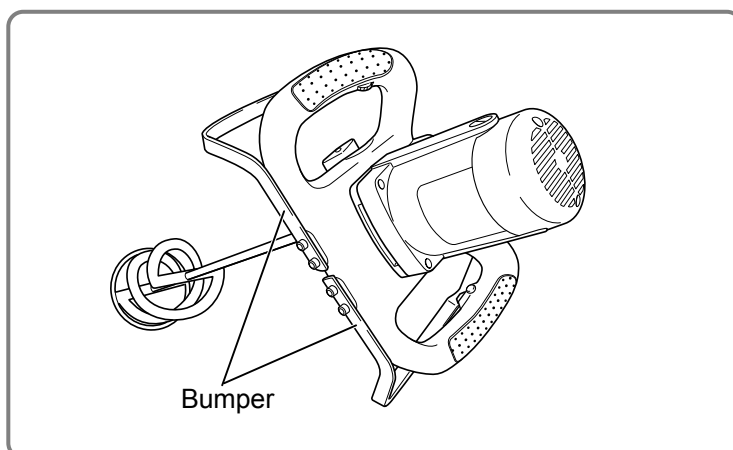
2 Soft start function

The soft start function reduces backlash at the start of rotation and prevents the spattering of materials being stirred. (Plans C and D do not offer this function.)

Maker Model	HITACHI	C, D
Item	UM 12VST UM 16VST	
Soft start	Equipped	Not equipped

3 Large bumper to prevent damage

A large bumper extending around the handle protects the user's hands, and protects the main body of the mixer in case the mixer is dropped.



SPECIFICATIONS

1. Specifications

Model		UM 12VST	UM 16VST
Item			
Stirrer diameter		120 mm	160 mm
Power source		AC single phase	
Type of motor		AC single phase commutator motor	
Type of switch		Trigger switch	
Enclosures	Rear cover	Polyamide resin	
	Housing	Polyamide resin	
	Handle	Polyamide resin	
	Bearing cover	Die cast aluminum alloy	
	Gear cover	Die cast aluminum alloy	
Voltage		230 V	
Current * ¹		5.0 A	6.9 A
Power input * ¹		1,100 W	1,500 W
Rotation speed	Low	150 to 300 min ⁻¹	
	High	300 to 650 min ⁻¹	
Weight	Net * ²	5.4 kg	5.6 kg
	Gross	9.1 kg	9.7 kg
Packaging		Corrugated cardboard box	
Cord	Type	Two-core cabtire cable	
	Overall length	4.0 m	4.0 m
Standard accessories		<ul style="list-style-type: none"> • 120 mm Stirrer ----- 1 • Spanner ----- 2 • Hex bar wrench ----- 1 • Carbon brush ----- 1 pair 	<ul style="list-style-type: none"> • 160 mm Stirrer----- 1 • Extension bar ----- 1 • Spanner ----- 2 • Hex bar wrench ----- 1 • Carbon brush ----- 1 pair

*1: Be sure to check the name plate on product, as power requirements vary depending on the area where the product is used.

*2: Measured weight excludes the cord, extension bar and stirrer.

COMPARISON WITH SIMILAR PRODUCTS

1. Comparison of Specifications

(Superior specifications:)

Item		Maker Model	HITACHI UM 12VST	C	HITACHI UM 16VST	D
Class		-	1,100 W Class		1,500 W Class	
Stirrer Diameter		mm	120	140	160	160
Fixing screw dia.		-	M14	M14	M14	M14
Input		W	1,100	1,200	1,500	1,600
Gear change		-	2-speed	2-speed	2-speed	2-speed
Rotation at no load	Low speed	min ⁻¹	150 to 300	0 to 400	150 to 300	0 to 350
	High speed	min ⁻¹	300 to 650	0 to 600	300 to 650	0 to 500
Speed control system		-	ON/OFF SW + Variable speed dial	Speed control by trigger	ON/OFF SW + Variable speed dial	Speed control by trigger
Soft start		-	Equipped	Not equipped	Equipped	Not equipped
Bumper		-	Equipped	Equipped	Equipped	Equipped
Overall length* ¹		mm	325	-	335	-
Weight** ²		kg	5.4	4.9	5.6	5.4

*1: Overall length excludes the extension bar and stirrer.

*2: Weight excludes the cord, extension bar and stirrer.

PRECAUTIONS ON SALES PROMOTION

1. Safety Instructions

In the interest of promoting the safest and most efficient use of the Models UM 12VST and UM 16VST Mixer by all of our customers, it is very important when concluding a sale that the salesperson carefully ensure that the buyer seriously recognizes the importance of the Handling Instructions, and fully understands the precautions listed on the Name Plate or Caution Plate attached to each tool.

A. Handling instructions

Although every effort is made in each step of design, manufacture, and inspection to provide protection against safety hazards, the dangers inherent in the use of any electric power tool cannot be completely eliminated. Accordingly, the Handling Instructions list general precautions and suggestions for the use of electric power tools, and specific precautions and suggestions on the use of the mixer to enhance the safe and efficient use of the tool by the customer. Salespersons must be thoroughly familiar with the Handling Instructions in order to offer appropriate guidance to the customer during sales promotion activities.

B. Caution on the Name Plate

Each tool is provided with a Name Plate indicating the following basic safety precautions on use of the tool.

[For Europe]



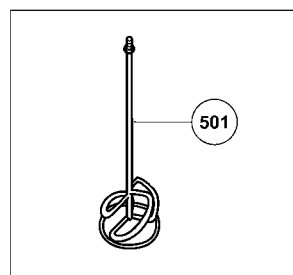
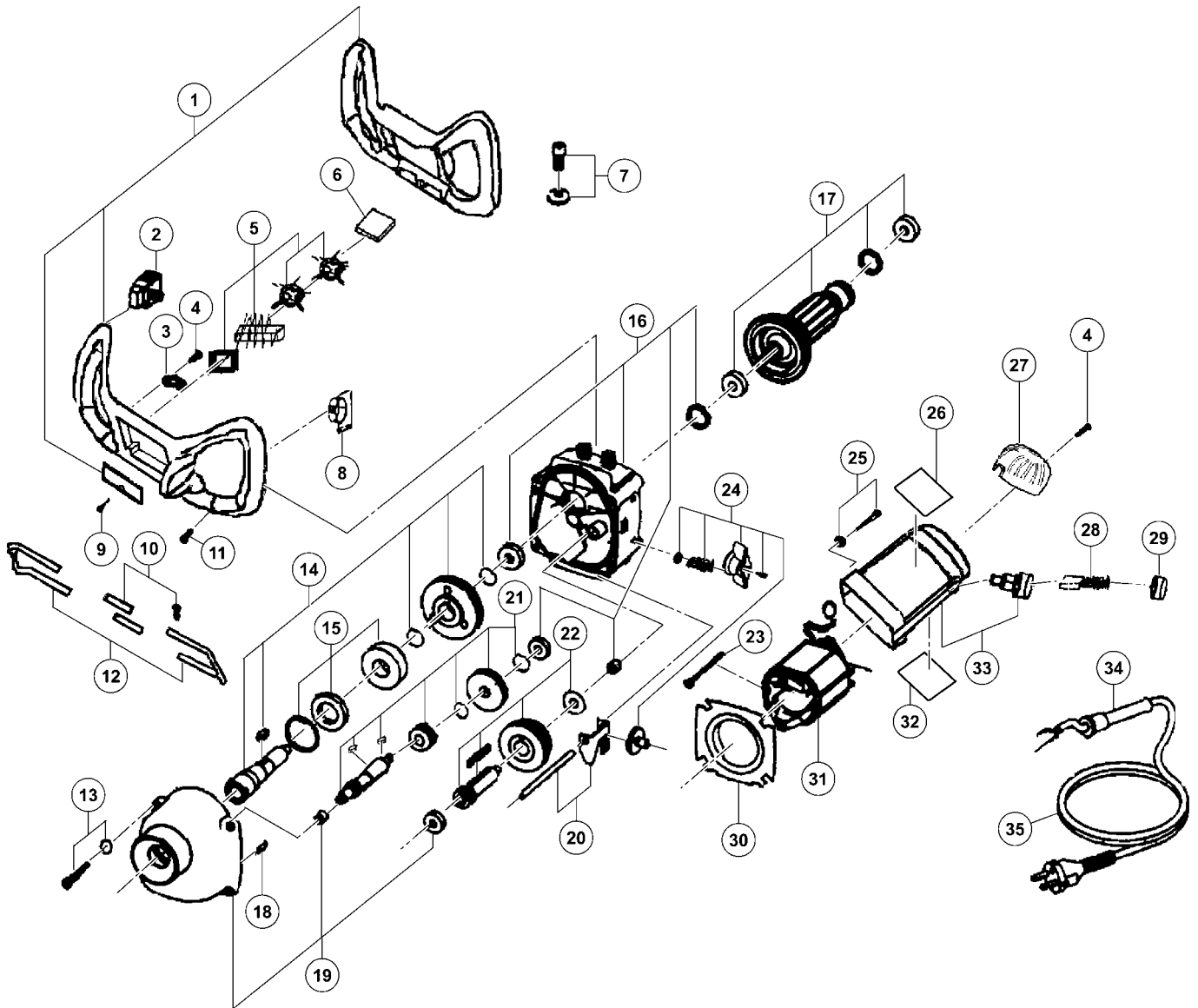
ELECTRIC TOOL PARTS LIST

■ MIXER

2010-12-22

Model UM 12VST

(E1)



PARTS

UM 12VST

ITEM NO.	CODE NO.	DESCRIPTION	NO. USED	REMARKS
1	333-604	HANDLE SET	1	
2	333-605	SWITCH	1	
3	333-609	CLAMP	1	
4	333-610	SCREW ST3.5 X 16 (4 PCS.)	4	
5	333-611	INDUCTANCE UNIT	1	
6	333-601	CONTROLLER	1	
7	333-606	SCREW M8 X 16 (4 PCS.)	4	
8	333-595	CIRCUITRY BOARD	1	
9	333-614	SCREW ST3.9 X 25 (5 PCS.)	1	
10	333-608	SCREW PLATE SET M6 X 20 (2 SET)	2	
11	333-613	SCREW ST3.9 X 20 (5 PCS.)	14	
12	333-607	HOB	1	
13	333-615	SCREW M5 X 20 (4 PCS.)	4	
14	333-617	SPINDLE GEAR SET	1	
15	333-618	BEARING WITH COVER	1	
16	333-619	GEAR BOX SET	1	
17	333-596	ARMATURE (UM 12VST)	1	
18	333-620	PIN (2 PCS.)	2	
19	333-616	BEARING COVER SET	1	
20	333-623	PIVOT SET	1	
21	333-621	SECOND PINION SET	1	
22	333-622	THIRD PINION SET	1	
23	333-627	SCREW ST4.2 X 70 (2 PCS.)	2	
24	333-624	LEVER SET	1	
25	333-630	SCREW M5 X 25 (4 PCS.)	4	
26		HITACHI LABEL	1	
27	333-602	REAR COVER	1	
28	333-631	CARBON BRUSH (2 PCS.)	2	
29	333-600	BRUSH CAP (2 PCS.)	2	
30	333-597	FAN GUIDE	1	
31	333-598	STATOR (UM 12VST)	1	
32		NAME PLATE	1	
33	333-599	MOTOR BOX SET	1	
34	333-636	SLEEVE	1	
35	333-637	CORD	1	

STANDARD ACCESSORIES

ITEM NO.	CODE NO.	DESCRIPTION	NO. USED	REMARKS
501	333-603	STIRRER D120	1	

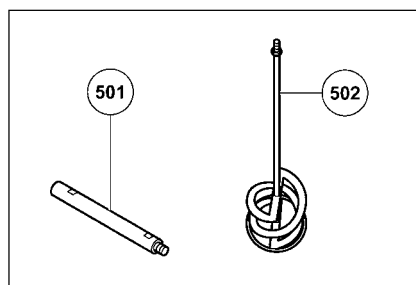
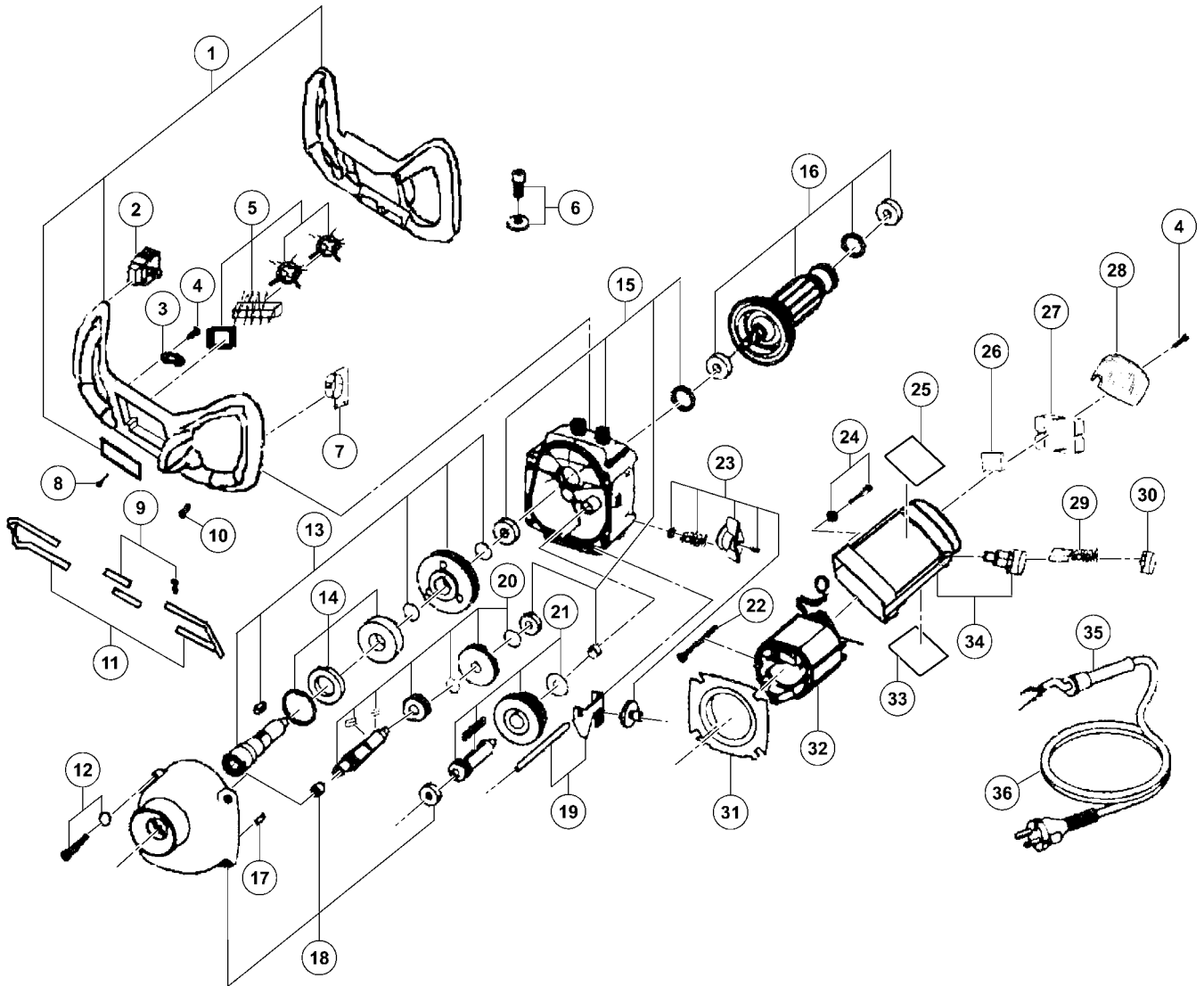
ELECTRIC TOOL PARTS LIST

■ MIXER

2010-12-22

Model UM 16VST

(E1)



PARTS

UM 16VST

ITEM NO.	CODE NO.	DESCRIPTION	NO. USED	REMARKS
1	333-604	HANDLE SET	1	
2	333-605	SWITCH	1	
3	333-609	CLAMP	1	
4	333-610	SCREW ST3.5 X 16 (4 PCS.)	4	
5	333-611	INDUCTANCE UNIT	1	
6	333-606	SCREW M8 X 16 (4 PCS.)	4	
7	333-612	CIRCUITRY BOARD	1	
8	333-614	SCREW ST3.9 X 25 (5 PCS.)	1	
9	333-608	SCREW PLATE SET M6 X 20 (2 SET)	2	
10	333-613	SCREW ST3.9 X 20 (5 PCS.)	14	
11	333-607	HOB	1	
12	333-615	SCREW M5 X 20 (4 PCS.)	4	
13	333-617	SPINDLE GEAR SET	1	
14	333-618	BEARING WITH COVER	1	
15	333-619	GEAR BOX SET	1	
16	333-625	ARMATURE (UM 16VST)	1	
17	333-620	PIN (2 PCS.)	2	
18	333-616	BEARING COVER SET	1	
19	333-623	PIVOT SET	1	
20	333-621	SECOND PINION SET	1	
21	333-622	THIRD PINION SET	1	
22	333-627	SCREW ST4.2 X 70 (2 PCS.)	2	
23	333-624	LEVER SET	1	
24	333-630	SCREW M5 X 25 (4 PCS.)	4	
25		HITACHI LABEL	1	
26	333-633	CONTROLLER	1	
27	333-634	PROTECTIVE GUARD	1	
28	333-635	REAR COVER	1	
29	333-631	CARBON BRUSH (2 PCS.)	2	
30	333-632	BRUSH CAP (2 PCS.)	2	
31	333-626	FAN GUIDE	1	
32	333-628	STATOR (UM 16VST)	1	
33		NAME PLATE	1	
34	333-629	MOTOR BOX SET	1	
35	333-636	SLEEVE	1	
36	333-637	CORD	1	

STANDARD ACCESSORIES

ITEM NO.	CODE NO.	DESCRIPTION	NO. USED	REMARKS
501	333-638	EXTENSION BAR	1	
502	333-639	STIRRER D160	1	